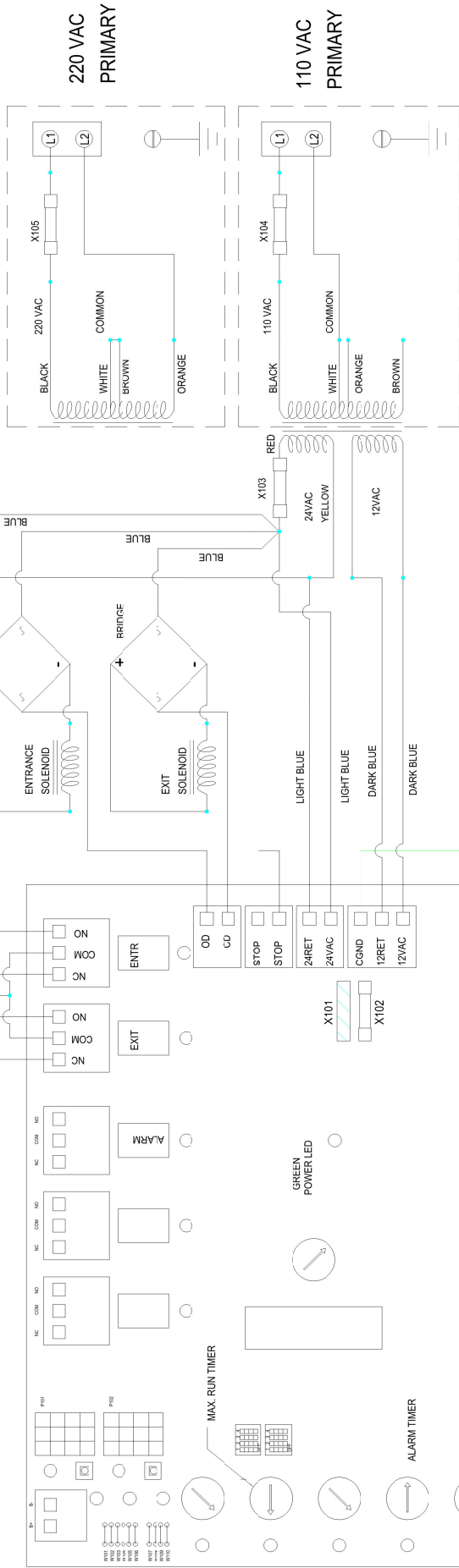


FACTORY WIRING  
 FIELD WIRING

TRAFFIC LIGHTS



- KEY:
- - LED
  - - TEST BUTTON
  - X101 - JUMPER
  - X102 - FUSE, 2 amps.
  - X103 - FUSE, 1.6 amps.
  - X104 - FUSE, 1.6 amps.
  - X105 - FUSE, .8 amps.
- ALL FUSES ARE RATED FOR 250V

NOTE:

- 1) IF TAMPER SWITCH IS NOT USED THEN A JUMPER WIRE IS REQUIRED.
- 2) X101 MUST BE SHORTED FOR PROPER OPERATION USE PIN F56202.

TRAFFIC LIGHT WIRE CHART

EXIT	ENTR.	1	2	3	4
FSAFE	FSECURE	GREEN	RED	RED	GREEN
FSECURE	FSAFE	RED	GREEN	GREEN	RED
FSAFE	FSAFE	GREEN	RED	GREEN	RED
FSECURE	FSECURE	RED	GREEN	RED	GREEN

REVISIONS

REV.	DESCRIPTION	BY	DATE
1	*****	***	**/****

ALL DIMENSIONS ARE IN INCHES UNLESS SPECIFIED TOLERANCE UNLESS SPECIFIED

0.0 + 0.060  
 0.00 ± 0.030  
 0.000 ± 0.015  
 0.0000 ± 0.005  
 ANGULAR ± 0.5°

DESIGNED BY/DATE: GBF 10/26/98  
 CHECKED BY/DATE: GVB 10/26/98



**PHILIPS**  
 ACCESS CONTROL HARDWARE DIVISION  
 7041 ORCHARD, DEARBORN, MI. 48126

DRAWING TITLE:  
 MULTI-CONTROLLER CONNECTIONS - ST 32&34 - 110/220VAC

THESE DRAWINGS & SPECIFICATIONS ARE THE PROPERTY OF AND INHERENT TO THE PHILIPS INDUSTRIES INC. AND ARE NOT TO BE DISCLOSED, REPRODUCED, COPIED OR USED AS THE BASIS OF MANUFACTURE OR SALE OF PRODUCTS AND/OR SERVICES, AND OTHERWISE, WITHOUT PHILIPS' PRIOR WRITTEN CONSENT.