

# **STG2 34 Series Security Turnstiles**

## **Assembly Instructions**

**BURLE**

# CONTENTS

FAMILIARIZE YOURSELF.....	2
TOOLS REQUIRED.....	2
MATERIAL LIST.....	3
FOUNDATION DRAWING.....	80-150
EXPLODED VIEW DRAWING.....	82-176

## READ ENTIRE INSTRUCTIONS AND FAMILIARIZE YOURSELF WITH DRAWINGS 80-150 AND 82-176 BEFORE BEGINNING ASSEMBLY

1. Position the lower shaft and bearing assemblies (1R & 1L on drawing 82-176) in desired location with respect to drawing 80-150 and 82-176.
2. Position barrier (4 on drawing 82-176) with respect to drawings 80-150 and 82-176.
3. Bolt center posts (3R & 3L on drawing 82-176) together using angle brackets (2 on drawing 82-176) and 3/8-16 x 3 in bolts and nuts. Finger tighten only at this time.
4. Place each assembled center post on its respective lower shaft and bearing assembly, as shown on drawing 82-176, aligning the pins on the shaft with the holes in the center posts. Stabilize the left center post assembly using the 3 in wooden shims under each lower arm and the right assembly with the 5-1/2 in shims.
5. Using the bar clamp, squeeze the top vertical supports of each cage (5R & 5L on drawing 82-176) until they will fit inside the sleeves of the ceiling plate (6 on drawing 82-176). Secure the ceiling plate to the cage making sure to drive the sleeves fully down on the vertical supports using a soft faced hammer (or regular hammer and block of wood to protect the galvanizing). Position the cage with respect to drawings 80-150 and 82-176.
6. The cover of the control mechanism (7 on drawing 82-176) must be removed before installing the control channel.

Before removing the cover, mark the **access door** side of the control channel. This side of the channel must be installed on the **exit** side. Remove the nine (9) 1/4-20 bolts securing the **access door** to the cover and save. Remove the remaining **lower** four

(4) 1/4-20 bolts securing the cover to the control channel and save. Remove the cover from the control channel.

7. **Note:** The control channel weighs approximately 225 pounds. Position the control channel so that the pins on the upper shaft line up with the holes in the center post assemblies and slowly lower into place. It may be necessary to shake the center post assemblies while doing this to fully seat the pins.
8. After the control channel is fully seated, line up the holes at each end with the respective holes in each cage. Install the 3/8 in bolts finger tight.

Line up the holes in the ceiling plates with the respective holes in the control channel and install the 5/16 -18 x 1in bolts and washers. Line up the holes in the control channel with the holes in the top of the barrier and install 5/16 in bolts, nuts and washers.

9. Tighten all bolts and nuts securely. Plumb and square entire unit. Install anchor bolts - refer to drawing 80-150.
10. Replace the control unit cover, making sure the access panel is on the **exit** side (refer to drawing 82-176). It will be necessary to remove the 3/8 in bolt furthest from the **exit** side on each end of the control channel. Once the cover is in place, re-install the 3/8 in bolts through the tabs at each end of the cover.

## TOOLS REQUIRED

- |           |  |
|-----------|--|
| One (1)   | 1/2 in Wrench, or Equivalent                         |
| Two (2)   | 9/16 in Wrenches, or Equivalent                      |
| One (1)   | 7/16 in Wrench, or Equivalent                        |
| One (1)   | Bar Clamp - Minimum 55 in Opening                    |
| One (1)   | Drill Motor  |
| One (1)   | 3/8 in Masonry Drill                                 |
| One (1)   | Soft Face Hammer, or Equivalent                      |
| Three (3) | 5-1/2 in High Wooden Block<br>(to be used as a shim) |
| Three (3) | 3 in High Wooden Blocks<br>(to be used as shims)     |

## MATERIAL LIST

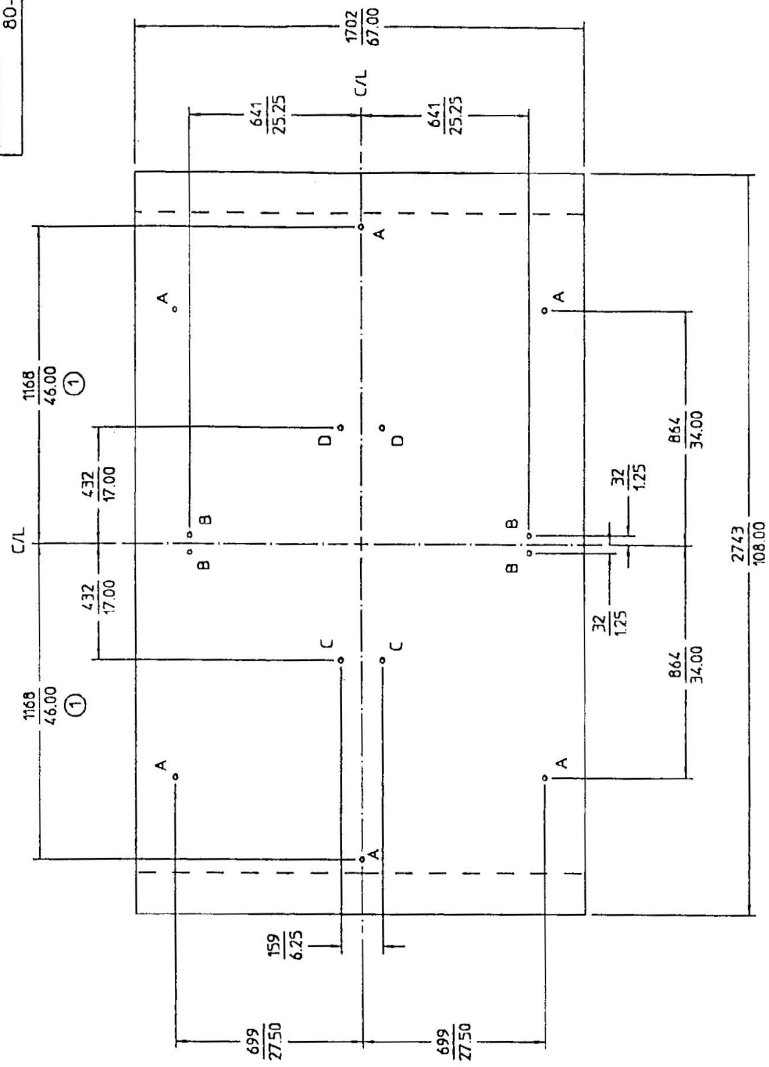
Two	(2)	Lower Shaft and Bearing Assembly
Six	(6)	Center Posts
Eighteen	(18)	Center Post Mounting Angles
One	(1)	Barrier
Two	(2)	Cage
Two	(2)	Ceiling Plate
One	(1)	Control Unit with Cover
Thirty-six	(36)	3/8-16 x 3 in Hex Head Bolts
Thirty-six	(36)	3/8-16 Nylock Hex Nuts
Four	(4)	3/8-16 x 1-1/4 in Hex Head Bolts
Four	(4)	3/8-16 Hex Nuts
Four	(4)	3/8 in Lock Washers
Eight	(8)	3/8 in Flat Washers

Four	(4)	5/16-18 x 1 in Hex Head Bolts
Six	(6)	5/16 in Flat Washers
Fourteen	(14)	3/8 in x 3-3/4 in Anchor Bolts
Two	(2)	5/16-18 x 1-1/2 in Hex Head Bolts
Two	(2)	5/16-18 Nylock Hex Nuts

SHOULD ANY QUESTIONS OR PROBLEMS ARISE DURING THE INSTALLATION FEEL FREE TO CONTACT:

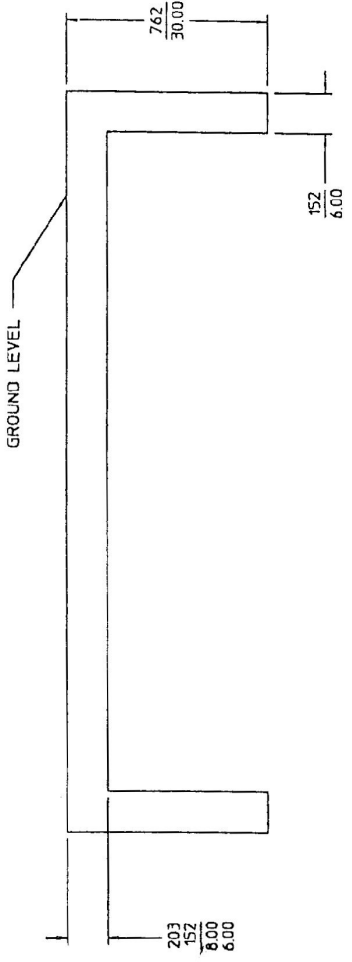
**PHILIPS CSS INC.**  
**ACCESS CONTROL HARDWARE**  
**7041 ORCHARD STREET**  
**DEARBORN, MICHIGAN 48126**  
**TEL: 313-846-1244 OR (800) 338-3692**  
**FAX: 313-846-3569**

- HOLES (FOR 3/8" WEDGE-TYPE ANCHOR BOLTS)
- A - CAGE (6)
  - B - BARRIER (4)
  - C - SPINDLE BEARING ASSEMBLY 'A' (2)
  - D - SPINDLE BEARING ASSEMBLY 'B' (2)



RECOMMENDED INSTALLATION FOR BURLE SECURITY TURNSTILE MODEL STG 34.

1. Allow 97" between supports.
2. Pour concrete foundation using dimensions shown above.
3. DO NOT PRE-SET ANCHORS IN CONCRETE BEFORE TURNSTILE ARRIVES. After arrival, slide the assembled turnstile off the shipping pallet and onto the concrete foundation. (Note: refer to installation instructions for how to remove turnstile from pallet.) Center the turnstile on foundation square and level each section. Drill the required anchor bolt holes. Wedge-Type anchors are provided.
4. To prevent swaying and otherwise unstable operating conditions, attach each side of the turnstile, near the top, to the fence, wall, etc. HARDWARE IS NOT PROVIDED BY THE MANUFACTURER.



REVISIONS		DATE	BY	DESCRIPTION
1	CHANGED FROM 4.5750	MAY 17/87	JMS	

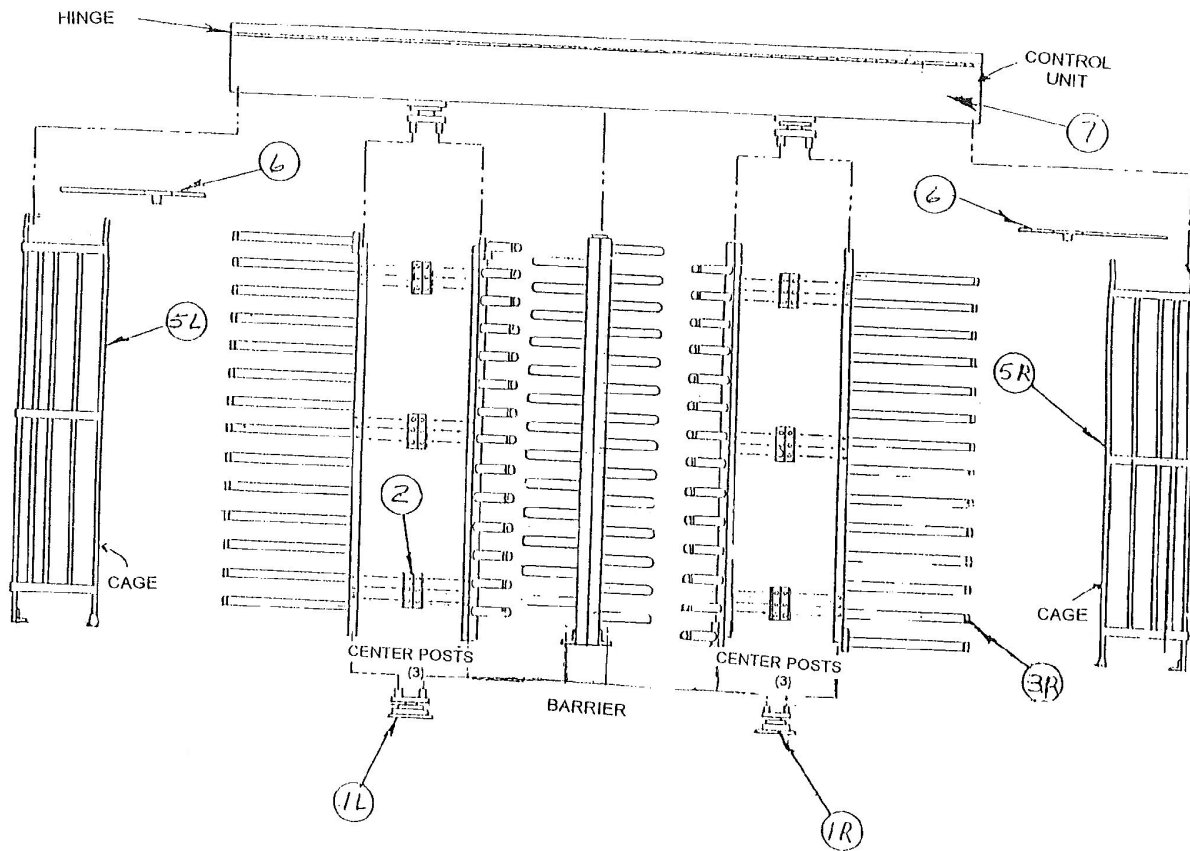
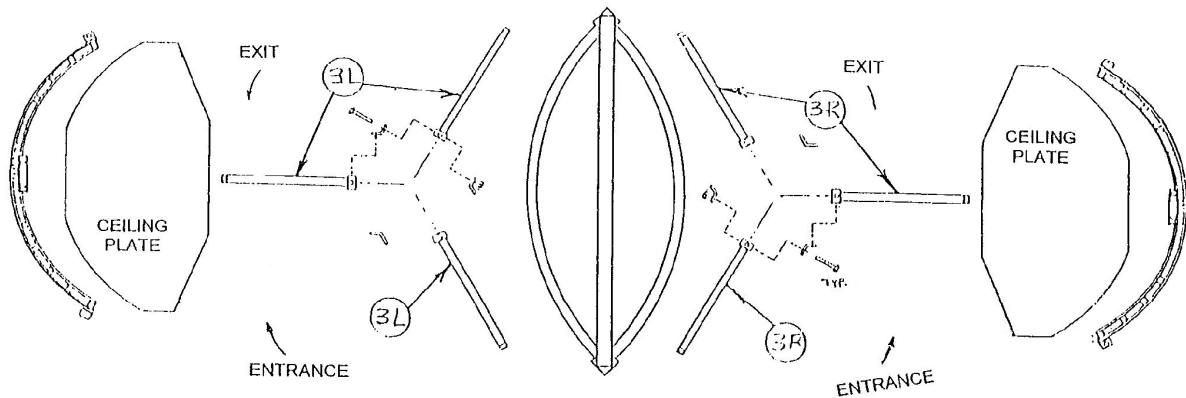
UNITS: MM INCHES

SCALE: 1" = 13'

FOUNDATION - STG 34

80-150

1 OF 1



PHILIPS CSS, INC. ACCESS CONTROL HARDWARE DEARBORN, MICHIGAN		NAME			
		DATE	03/14/64		
		BY	DHL	CKL	ENG
PART NAME: TURNSTILE EXPLODED VIEW		PART No			
MODEL: STG-34 SERIES		82-176			